

# Legitronic® Labeling Software

## Label Design & Printing Software

with RFID Encoding & FDA Compliance Features



**Weber®**  
LABELING & CODING SOLUTIONS

## The Cornerstone of Labeling

For over seventy years, Weber has been supplying industry with the most advanced on-site labeling systems available.

Today these systems include high-performance label printers and RFID printer-encoders; fast, accurate label printer-applicators and RFID encoder-applicators; plus high-quality pressure-sensitive and RFID smart label materials.

At the heart of all of these Weber turn-key systems is our exclusive Legitronic® Labeling Software, the most versatile label design,



printing and  
RFID encoding  
software available.

Legitronic Labeling Software makes it easy to design labels with high-density bar codes, text and graphics to satisfy countless applications.

And now this versatile package also makes it simple to encode RFID smart labels. There's even a special version that can be used to meet the specific requirements of the Food & Drug Administration.

As the cornerstone of our complete labeling systems, Legitronic Labeling Software is fully compatible with our extensive line of labeling equipment. It means that Weber can continue to provide you with a complete array of labeling solutions.

# Fast. Easy. Flexible.

## Legitronic® Labeling Software

**Weber's exclusive software package furnishes you with the versatile label printing and RFID encoding features you need to meet today's labeling requirements.**

Designed for high-speed, 32-bit operating systems, this easy-to-use package combines advanced editing and other key features to maximize the efficiency of label formatting, editing, printing and RFID encoding for virtually any application.

This software package is so flexible that it eliminates the need to maintain a separate database for label information. Open Database Connectivity (ODBC) and Object Linking and Embedding (OLE) features ensure compatibility with many popular database, word processing and graphic design programs. Plus, remote input capabilities allow direct access from other devices, such as scales and PLCs.

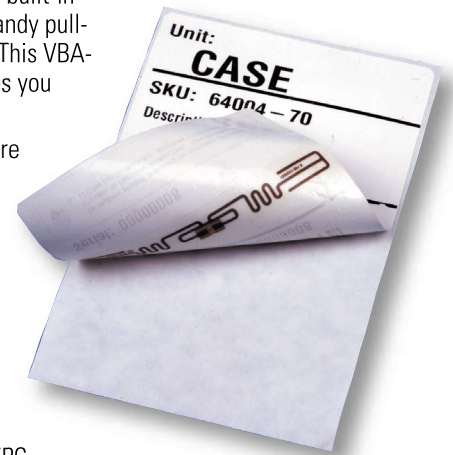
In addition, you can create labels from a selection of built-in features, including numerous bar code symbologies. Handy pull-down menus streamline formatting to a single screen. This VBA-enabled (Visual Basic Application) package also enables you to customize label design and print functions.

Printing is just as simple. Legitronic Labeling Software is compatible with thermal-transfer, direct-thermal and laser label printers, as well as with standard Windows®-based printers.

The software is ideal for networks, too. It efficiently handles multiple systems and shared file support, while a built-in security system restricts use and protects information.

And, if you're complying with the newest RFID requirements of many retailers and government agencies, our software now supports the encoding of EPC-compatible smart labels to meet Gen 1 and Gen 2 protocols.

In other words, the same software you use to design and print labels also can help you meet the very newest compliance standards. It really is that convenient.



*Legitronic Labeling Software can open and print label formats created with previous versions of Weber's Windows®-based packages.*

### Additional Features

- ◆ Superior audit trail capabilities for accurate product tracking
- ◆ If-then-else logic statements for calculating expiration dates, best-before dates and more
- ◆ Custom screen designs and batch control capabilities for easy data entry
- ◆ See back page for more features

### Legitronic Labeling Software Requirements

- ◆ Pentium PCs (minimum 90MHz)
- ◆ Windows 98se, NT, 2000 or XP
- ◆ CD-ROM drive
- ◆ 256-color monitor with 800x600 resolution
- ◆ Minimum 25MB free hard disk space; 32MB of RAM

[www.webermarking.com/html/software.html](http://www.webermarking.com/html/software.html)



## Legitronic® Labeling Software

### *Secure Series - For FDA Compliance*

Weber's Secure Series is a version of Legitronic Labeling Software that includes the new Security Administrator that helps meet the requirements of FDA 21 CFR Part 11, a compliance standard regarding electronic records and electronic signatures.

While this specialized package is essential for FDA compliance, it also can be used by companies that wish to record and retain secure label information as a byproduct of the labeling process. Key features include:

- ◆ Ability to discern altered records
- ◆ Ability to generate copies of electronic records in human-readable and electronic form
- ◆ Enables the accurate retrieval of electronic records
- ◆ Limits system access
- ◆ Keeps a time-stamped audit trail of various actions
- ◆ Provides extra security measures for open systems
- ◆ Maintains numerous electronic signature requirements, components and controls

### Nutrition Facts

Serving Size 1slice (26g)  
Servings per container About 20

Amount per serving	
Calories 70 Calories from Fat 0	
<b>% Daily Value</b>	
Total Fat 0g	0%
Saturated Fat 0g	0%
Cholesterol 0mg	0%
Sodium 16mg	0%
Total Carbohydrate 14g	5%
Dietary Fiber 0g	0%
Sugars 0g	
Protein 3g	

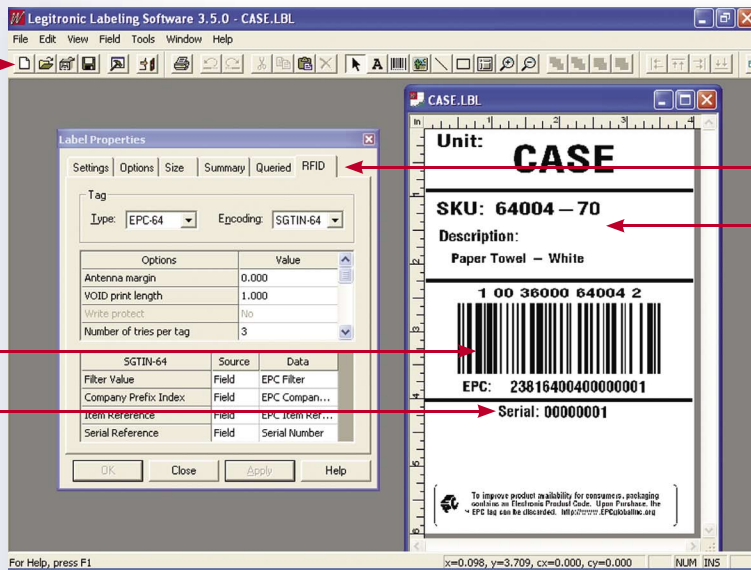
Vitamin A 0% • Vitamin C 0%  
Calcium 2% • Iron 4%

\*Percent Daily Values are based on a 2,000 calorie diet.

# Legitronic® Labeling Software

## Features

Weber's Legitronic Labeling Software offers many advanced features to simplify label creation – but that's just the beginning. Our exclusive software also provides you with powerful information tools that integrate with other applications to streamline your entire operation.



### Flexible Design Features

- ◆ Single-screen user interface
- ◆ WYSIWYG design screens
- ◆ Simple point-and-click operation
- ◆ Graphics compatibility with BMP, EPS, JPEG, PCX, WMF, TIFF, WPG and TGA files
- ◆ Supports all popular bar code symbologies
- ◆ Supports native printer fonts and bar codes, plus Windows® TrueType® fonts
- ◆ Accepts constant and variable data
- ◆ Left/center/right justification for text fields; flush right/left for paragraphs; automatic word wrap; and field concatenation
- ◆ Label design in any orientation
- ◆ Units of measure in inches, centimeters or printer dots
- ◆ Selectable bar code ratio, check digits, human-readable characters and module width
- ◆ Label margins and inter-label gap selection
- ◆ Auto incrementing, decrementing and full character serial numbers

### Advanced Editing Features

- ◆ Display and grid-snap; on-screen ruler; various zoom options; permanent settings
- ◆ Select to move, copy, delete and align one or many fields
- ◆ Tools to resize or rotate graphics

### Powerful Printing Capabilities

- ◆ On-demand or batch mode printing
- ◆ WYSIWYG viewing for quality inspection prior to printing
- ◆ Print in any orientation
- ◆ Print to multiple printers

- ◆ Formats can be converted to a different printer type
- ◆ On-demand setting of print speed and darkness
- ◆ Powerful Legitronic print manager; separate queue for each printer port
- ◆ Supports printer-downloaded fonts, graphics and label templates

### Information Processing

- ◆ Uses ODBC-compatible databases
- ◆ Point-and-click record selection
- ◆ Database sharing on a network
- ◆ Powerful database query feature

### Input Sources

Keyboard, ASCII file, Serial Port, Network, ODBC, AS/400 link, OLE or can link data from multiple sources

### Additional Features

- ◆ Custom screen design capabilities simplify variable data entry at print time and permit label format selection from a database
- ◆ Batch control feature ensures compatibility with other software applications
- ◆ VBA-enabled for customization of label design and label printing solutions
- ◆ Multi-lingual prompts and foreign language versions available

### RFID Encoding Features

- ◆ Encodes tags compatible with EPC Gen 1 and Gen 2 protocols
- ◆ Supports 64-bit and 96-bit RFID tags
- ◆ RFID encoding is simplified through the use of the Label Properties menu

## Weber Marking Systems, Inc.

**World Headquarters**  
Weber Marking Systems, Inc.  
711 W. Algonquin Road  
Arlington Heights, IL 60005-4457  
Phone: 847.364.8500  
Fax: 847.364.8575  
E-Mail: [info@webermarking.com](mailto:info@webermarking.com)  
[www.webermarking.com](http://www.webermarking.com)

**Canada**  
Weber Marking Systems of Canada  
6180 Danville Road  
Mississauga, Ontario L5T 2H7  
Phone: 905.564.6881  
Fax: 905.564.6886  
E-Mail: [info@webermarking.ca](mailto:info@webermarking.ca)  
[www.webermarking.ca](http://www.webermarking.ca)

**United Kingdom**  
Weber Marking Systems UK  
Macmerry Industrial Estate  
Tranent, East Lothian EH33 1HD  
Scotland  
Phone: 44.18.756.11111  
Fax: 44.18.756.13310  
E-Mail: [sales@weber.co.uk](mailto:sales@weber.co.uk)  
[www.weber.co.uk](http://www.weber.co.uk)

**Germany**  
Weber Marking Systems GmbH  
Postfach/Box 0154  
Honnefer Str. 41  
D-53572 Unkel/Rhein  
Phone: 49.2224.77080  
Fax: 49.2224.77082  
E-Mail: [info@webermarking.de](mailto:info@webermarking.de)  
[www.webermarking.de](http://www.webermarking.de)

**Thailand**  
Weber Marking Systems (Thailand) Ltd.  
10/106 Moo 7 Soi Wat Hua Krabue  
Bangkhuntien Road  
Takhum, Bangkhuntien, Bangkok  
10150, Thailand  
Phone: 66.2.897.4871  
Fax: 66.2.897.4272  
E-Mail: [sales@weber.co.th](mailto:sales@weber.co.th)

**Belgium**  
Weber Marking Systems NV/SA  
Loten 1  
B-4700 Eupen - Belgium  
Phone: 32.87.593979  
Fax: 32.87.593970  
E-Mail: [mail@webermarking.be](mailto:mail@webermarking.be)

**Denmark**  
Weber Marking Systems A/S  
Nordkrogen 7  
DK-7300 Jelling, Denmark  
Phone: 45.75.87.26.00  
Fax: 45.75.87.26.10  
E-Mail: [sales@norconweber.dk](mailto:sales@norconweber.dk)

**Netherlands**  
Weber Etiketten BV  
Steurstraat19,  
1317 NZ Almere, Nederland  
Phone: 036.5345254  
Fax: 036.5345659  
E-Mail: [etiketten@weber.nl](mailto:etiketten@weber.nl)  
[www.weber.nl](http://www.weber.nl)

**Austria**  
BluhmSysteme GmbH  
Rustorf 82  
A 4690 Schwanenstadt, Austria  
Phone: 43.7673.4972  
Fax: 43.7673.4974  
E-mail: [gresch@bluhmsysteme.com](mailto:gresch@bluhmsysteme.com)

**Ireland**  
Weber Marking Systems Ireland  
61 Irish Street, Enniscorthy  
County Wexford, Ireland  
Phone: 353.54.33.778  
Fax: 353.54.33.284  
E-Mail: [weberireland@eircom.net](mailto:weberireland@eircom.net)

**Turkey**  
Weber Etiket ve Etiketleme Sistemleri  
San ve Tic Ltd., Sti.  
Nazmi Akbaci Ticaret No. 208 AK  
TR-80670 Maslak Istanbul, Turkey  
Phone: 90.212.285.9400  
Fax: 90.212.285.0574  
E-Mail: [ildokuz@etaetiketleme.com](mailto:ildokuz@etaetiketleme.com)

# Weber®

LABELING & CODING SOLUTIONS

[www.webermarking.com](http://www.webermarking.com)