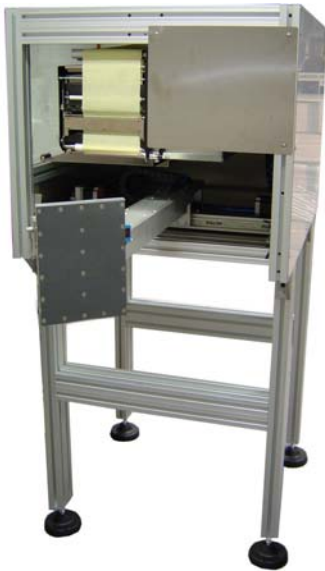


AP180 Information



The AP180 is a 3-SIDE-PALLET-APPLICATOR with a special actuator which is powered by stepper motors. The label printing is accomplished by a Zebra print module (170PAX or compatible). The AP180 is structured as a box-shaped frame made of aluminium profiles, covered by stainless steel panels on all sides except the transparent side door.

The A5 format labels in "portrait" orientation (EAN128 standard), can be applied either at short distance, through air blow, and by direct contact of the application plate onto the product surface.

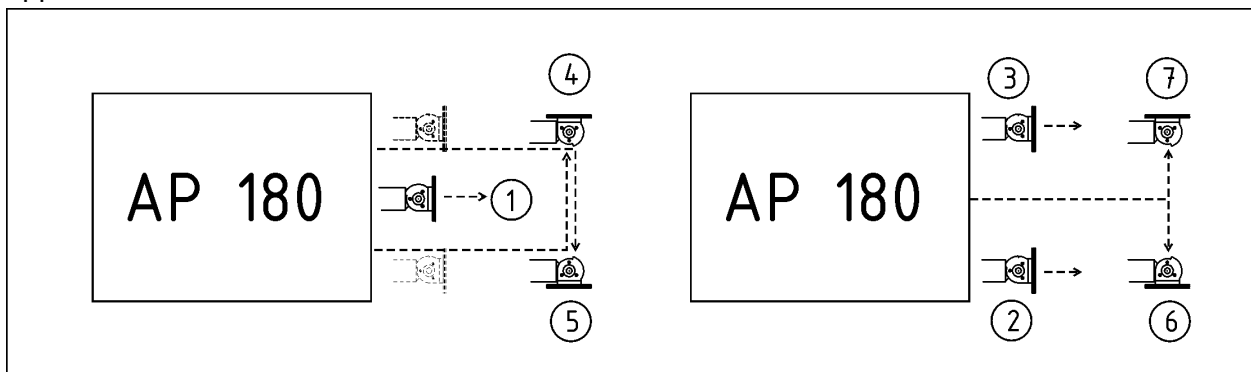
The AP180 allows to apply two labels (e.g. front + side) at one pallet stop using only one trigger.

Specifications:

Cabinet (as standard):	aluminium profile with stainless steel panels
Dimensions (height x width x length):	651 x 732 x 987 mm
Weight:	60 kg (not including the printer)
Stand (based on aluminium profiles):	customized height (depending on the application) +/- 40 mm adjustable
Electrical supply:	85-264 VAC / 50-60Hz (1~)
Power requirement:	max 300W (not including the printer)
Temperature:	10- 35 ° C
Environmental conditions:	20-80% relative humidity (not condensing)
LCD backlit Display	2-lines with each 16 characters
Pneumatic supply:	6 – 10 bar, according to DIN ISO 8573-1
Maximum flow rate:	500 NI/min.
Air Consumption:	40 NI/min (worst case)
X axis range:	500 mm
Y axis range:	800 mm (750 mm usable stroke)
Z axis range:	+/- 90°
Label position:	285 mm (from base to upper edge of the label)
Application plate size (width x height):	160 x 220 mm
Proximity sensor (on the tamp plate):	1
Label format:	max 170 x 230 mm (A5 in "portrait" orientation)
Label-Roll, outside diameter:	Ø =300 mm (equals 450 m) Core = 76 mm (3 ")

Possible Arm Movements

The AP 180 is able to perform up to seven different application cycles. For a customized setup each cycle can be programmed. This drawing will illustrate 7 possible movements of the applicator arm.



Rate of application

For a 3-side-labelling it is necessary to stop the pallet at two position. At a conveyer speed of 15 m/min and including two pallet stops, it is possible to reach an application rate up to 90 pallets per hour.

