

Model 5300 Twin-Tamp

Label Printer - Applicator



Weber's Model 5300 Twin-Tamp label printer-applicator combines a high-performance thermal/thermal-transfer label printer with a specially configured applicator to satisfy the printing and two-label, adjacent-panel application of carton labels in line.

Designed, engineered and built exclusively by Weber, the Twin-Tamp system is available with a choice of print engines, including 203- or 300-dpi units from manufacturers like Zebra, Sato and Datamax. Label sizes range from 2.0" wide and 1.0" long to 4.0" wide and 6.0" long. Each system can produce variable-sized text, bar codes and graphic images at speeds programmable up to 16 ips.

After a label is printed, it is automatically peeled from its liner and retained by vacuum on a non-contact, tamp-blow applicator pad. The tamp pad is mounted on a 90-degree rotary swing arm that reaches across a conveyor and blows the label to the front panel of the moving carton. Upon its return, a second label is printed and a separate straight-line stroke applies that label to the side of the carton to complete the cycle. Depending on label size, the system can maintain up to 40 cycles per minute at a placement accuracy of $\pm 0.03"$.

The system also can be configured to label side and rear panels, or single panels. And it

easily adjusts to various conveyor heights and carton sizes when mounted on a heavy-duty stand.

Ruggedly constructed for use in a wide variety of industrial environments, the Twin-Tamp can handle harsh conditions and long, continuous duty cycles.

Weber also took the hassle out of routine maintenance. The system is programmed with built-in machine cycle diagnostics for self-testing of normal operating cycles, plus input diagnostics that permit testing on specific functions.

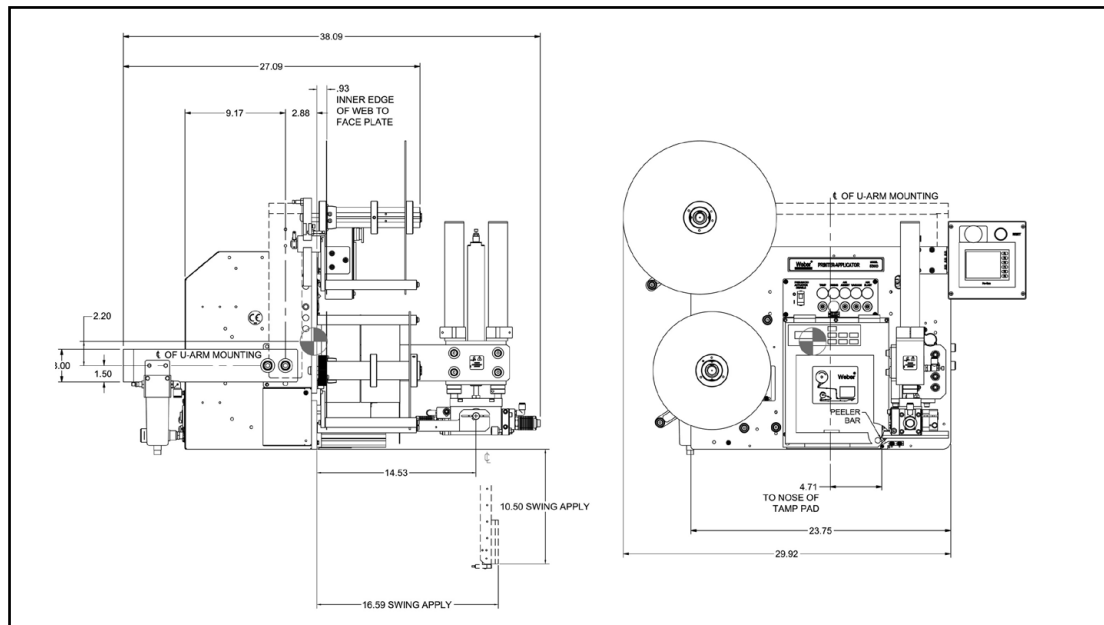
The Twin-Tamp operates with Weber's proprietary Print-Apply labeling software, which simplifies label formatting, editing and printing. Weber also offers a wide variety of pressure-sensitive custom labels and compatible thermal-transfer ribbons to meet virtually any labeling requirement.

Special Features

- ◆ Monitor system operation via a web browser
- ◆ Interface with external PLCs
- ◆ One-to-one media consumption reduces changeovers
- ◆ System memory stores multiple print jobs
- ◆ Microprocessor controller with optional remote umbilical

Model 5300 Twin-Tamp

Printer - Applicator Specifications



Dimensions

29.92" L x 38.09" W x 28.25" H
(760mm x 967mm x 717.5mm)

Weight

Approximately 196 lbs. (88.9kg);
without media

Electrical

115 VAC, 60 cycle, 5 amps; overload
protection built-in
(220 VAC, 50 cycle optional)

Air Requirements

5 cfm @ 90 psi

Product Sensing

Photoelectric

Printing Methods

Direct-thermal or thermal-transfer

Print Resolution

203 dpi (8 dots/mm) or
300 dpi (12 dots/mm)

Label Sizes

Minimum*: 2.0"W x 1.0"L
(50.8mm x 25.4mm)
Maximum*: 4.0"W x 6.0"L
(101.6mm x 152.4mm)

Print Area*

Up to 4.0"W x 6.0"L
(101.6mm x 152.4mm)

Print Speed*

Up to 16.0" (406.4mm) per second
at 203 dpi
Up to 8.0" (203mm) per second
at 300 dpi

Communications Interface

RS-232C; Centronics compatible

Print Characters and Bar Codes

Text: Eight fonts, including OCR A & B
representation
Bar Codes: UPC A & E, EAN 8 & 13, Code
39, 1 2 of 5, Code 128, Codabar, MSI, 2 of
5, Code 93, UPC Bookland and others
*Text and bar codes can be rotated in 90-
degree increments*

Label Roll Size

Standard 13.75" (349.3mm) diameter

Labeling Speed

Contingent upon printer selected, label size
and label content

Label Placement

Accurate to ±0.03" (.76mm) when labels
are produced to specifications and product
handling is controlled

Labels

Die-cut, waste removed with 0.125" (3mm)
minimum separation between labels in
running direction and 0.125" (3mm)
maximum web over label width; direct
or thermal-transfer

Labeling Software

Weber Print-Apply Software

Options

Choice of Datamax, Sato, Zebra print
engines; heavy-duty stand

* *Dependent on printer selected*

Weber Marking Systems, Inc.

World Headquarters

Weber Marking Systems, Inc.
711 W. Algonquin Road
Arlington Heights, IL 60005-4457
Phone: 847.364.8500
Fax: 847.364.8575
E-mail: info@webermarking.com
www.webermarking.com

Canada

Weber Marking Systems of Canada
6180 Danville Road
Mississauga, Ontario L5T 2H7
Phone: 905.564.6881
Fax: 905.564.6886
E-mail: info@webermarking.ca
www.webermarking.ca

United Kingdom

Weber Marking Systems UK
Macmerry Industrial Estate
Tranent, East Lothian EH33 1HD
Scotland
Phone: 44.18.756.11111
Fax: 44.18.756.13310
E-mail: sales@weber.co.uk
www.weber.co.uk

Germany

Weber Marking Systems GmbH
Postfach/Box 0154
Honnefer Str. 41
D-53572 Unkel/Rhein
Phone: 49.2224.77080
Fax: 49.2224.770820
E-mail: info@webermarking.de
www.webermarking.de

Thailand

Weber Marking Systems (Thailand), Ltd.
39/73 Samutsakom Industrial Estate
Moo 2, Rama 2 Road, Bang Ka-Jao,
Muang, Samutsakom 74000 Thailand
Phone 66.0.34.490639
Fax 66.0.34.490.638
E-mail: sales@weber.co.th

Belgium

Weber Marking Systems SA
Interleuvenlaan Nr. 23, Bus 2
3001 Leuven-Heverlee
Belgium
Phone: 32.16.38.79.50
Fax: 32.16.38.79.59
E-Mail: info@webermarking.be

Denmark

Bluhm Danmark A/S
Nordkrogen 7
DK-7300 Jelling, Denmark
Phone: 45.75.87.26.00
Fax: 45.75.87.26.10
E-mail: salesdk@bluhmsysteme.com
www.bluhmsysteme.dk

France

K-Roll Etiquetage
ZI de Montaudran
15, impasse Didier Daurat-BP 44419
31 405 TOULOUSE CEDEX 4- FRANCE
Phone: (33) 5.62.47.27.37
Fax: (33) 5.62.47.16.26
E-mail: k-roll@k-roll.fr
www.k-roll.fr

Austria

BluhmSysteme GmbH
Rustorf 82
A 4690 Schwanenstadt, Austria
Phone: 43.7673.4972
Fax: 43.7673.4974
E-mail: gresch@bluhmsysteme.com

Ireland

Weber Marking Systems Ireland
Kilcannon Industrial Estate, Enniscorthy
County Wexford, Ireland
Telephone 353 539 233778
Fax 353 539 233284
E-mail: weberireland@eircom.net

Turkey

Weber Etiket ve Etiketleme Sistemleri
San ve Tic Ltd., Sti.
Nazmi Akbaci Ticaret No. 208 AK
TR-80670 Maslak Istanbul, Turkey
Phone: 90.212.285.9400
Fax: 90.212.285.0574
E-mail: ildokuz@etaetiketleme.com

2-08