

# Model 2600Lt

E c o n o m i c a l P r i n t e r - A p p l i c a t o r



Weber's exclusive Model 2600Lt is an ideal unit for moderate duty cycles or for initial entry into on-line print-and-apply labeling. This truly economical system addresses numerous applications, and includes functions formerly limited to higher-cost, higher-duty systems.

The Model 2600Lt—engineered, assembled and available only from Weber—integrates the latest direct-thermal/thermal-transfer print engine from Sato Corporation: the Lt408. The unit prints 203-dpi text, bar codes and graphic images at speeds up to 6 ips, and will dispense labels up to 4.25" wide and 6" in length.



Each label is printed in the next-out mode to assure cost efficiency, and then it's applied nearly instantly to a

carton or product on the production or packaging line. Utilizing the time-tested tamp-blow method of application, the printed pressure-sensitive label is peeled from its liner and is retained by vacuum on the applicator's tamp pad. The pad is extended (8" standard stroke),

the vacuum is reversed, and the labels is blown onto the product or package from approximately 0.25".

The Model 2600Lt's standard applicator pad can be adapted to handle various label sizes, and is provided in a quick-change configuration. In no time at all, the tamp pad can be removed and another fastened in its place to accept a different size label.

Options include a variable stroke sensor, a label-on-pad sensor, and an adjustable stand that enables the system to be oriented for top or side application.

Standard features include durable anodized aluminum construction, an external user interface with LED and LCD displays, inputs/outputs to accommodate a product sensor or other optional accessories, plus a stepper-driven rewind.

The Model 2600Lt operates with Weber's Print-Apply software, which simplifies label formatting, editing and printing. Weber also manufactures a wide variety of stock and custom pressure-sensitive labels, and provides application-specific printer ribbons for thermal-transfer operation.

## KEY FEATURES

- Economical system addresses numerous applications
- Excellent 203 dpi print quality
- Handles labels up to 4.25"W and 6"L
- Accurate labeling to within  $\pm 0.06$ "

**Weber**  
LABELING & CODING SOLUTIONS

# Weber Marking Systems, Inc.

## World Headquarters

Weber Marking Systems, Inc.  
711 W. Algonquin Road  
Arlington Heights, IL 60005-4457  
Phone: 847.364.8500  
Fax: 847.364.8575  
E-Mail: info@webermarking.com  
www.webermarking.com

## Canada

Weber Marking Systems of Canada  
6180 Danville Road  
Mississauga, Ontario L5T 2H7  
Phone: 905.564.6881  
Fax: 905.564.6886  
E-Mail: info@webermarking.ca  
www.webermarking.ca

## United Kingdom

Weber Marking Systems UK  
Macmerry Industrial Estate  
Tranent, East Lothian EH33 1HD  
Scotland  
Phone: 44.18.756.11111  
Fax: 44.18.756.13310  
E-Mail: sales@weber.co.uk  
www.weber.co.uk

## Germany

Weber Marking Systems GmbH  
Postfach/Box 0154  
Honnefer Str. 41  
D-53572 Unkel/Rhein  
Phone: 49.2224.77080  
Fax: 49.2224.770820  
E-Mail: info@webermarking.de  
www.webermarking.de

## Thailand

Weber Marking Systems (Thailand) Ltd.  
10/106 Moo 7 Soi Wat Hua Krabue  
Bangkhuntien Road  
Takham, Bangkhuntien, Bangkok  
10150, Thailand  
Phone: 66.2.897.4871  
Fax: 66.2.897.4272  
E-Mail: sales@weber.co.th

## Belgium

Weber Marking Systems NV/SA  
Loten 1  
B-4700 Eupen - Belgium  
Phone: 32.87.593979  
Fax: 32.87.593970  
E-Mail: mail@webermarking.be

## Denmark

Weber Marking Systems A/S  
Nordkrogren 7  
DK-7300 Jelling, Denmark  
Phone: 45.75.87.26.00  
Fax: 45.75.87.26.10  
E-Mail: sales@norconweber.dk

## Netherlands

Weber Etiketten BV  
Stuurstraat19,  
1317 NZ Almere, Nederland  
Phone: 036.5345254  
Fax: 036.5345659  
E-Mail: etiketten@weber.nl  
www.weber.nl

## Ireland

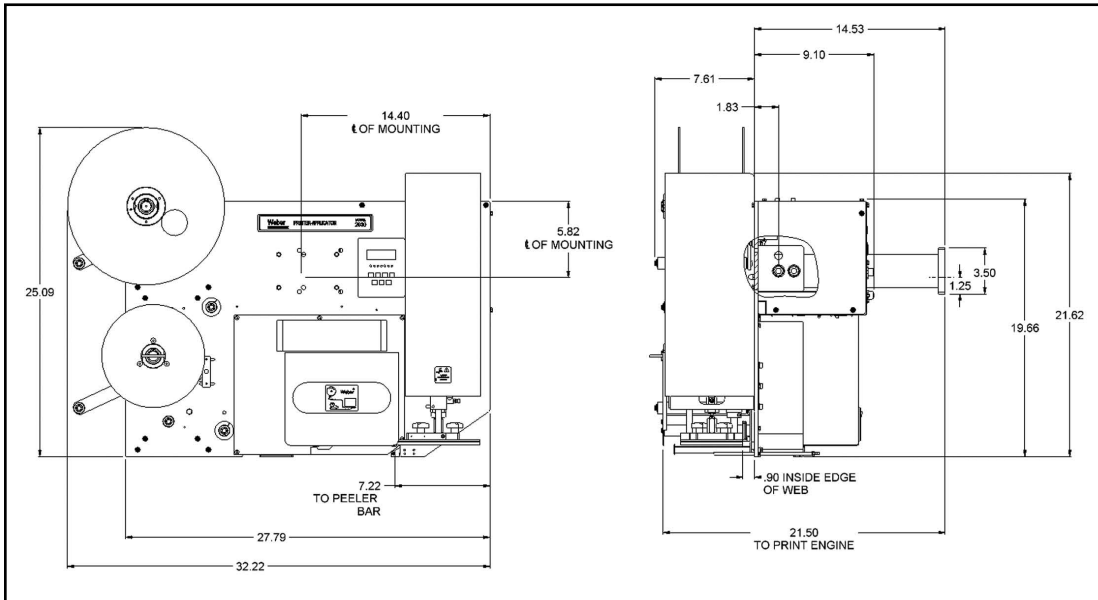
Weber Marking Systems Ireland  
61 Irish Street, Enniscorthy  
County Wexford, Ireland  
Phone: 353.54.33.778  
Fax: 353.54.33.284  
E-Mail: weberireland@eircom.net

## Turkey

Weber Etiket ve Etiketleme Sistemleri  
San ve Tic Ltd., Sti  
Nazmi Akbaci Tocarret No. 205-207 AK  
TR-80670 Maslak Istanbul, Turkey  
Phone: 90.212.285.9400  
Fax: 90.212.285.0574  
E-Mail: eta@turk.net

# Model 2600Lt

## Economical Printer - Applicator Specifications



### Dimensions

32.22"L x 21.50"W x 25.09"H  
(81.9cm x 54.6cm x 63.7cm)

### Weight

110 lbs. (49.9kg)

### Electrical

115 VAC, 60 cycle, 5 amps; overload protection built in; 220 VAC, 50 cycle optional

### Communication Interface

RS-232-C - standard  
Parallel - optional  
Ethernet - optional  
Wireless - 802.11b optional  
RS422/485 - optional

### Air Requirements

3 cfm at 90 psi

### Product Sensing

Photoelectric

### Printing Methods

Direct-thermal or thermal-transfer

### Print Resolution

203 dpi

### Label Sizes

Max 4.25"W x 6.0"L (114.3mm x 152.4mm)  
Min 1.125"W x .60"L (28.6mm x 15.2mm)

### Print Speed

Up to 6 ips (152mm)

### Label Roll Size

Maximum diameter 12.0" (305mm)

### Labeling Speed

Contingent upon label size/content

### Label Placement

Accurate to  $\pm 0.06"$  (1.5mm) when labels are produced to specifications and product handling is consistent and controlled

### Labels

Die-cut, waste removed with 0.125" (3mm) minimum separation between labels in running direction and 0.125" (3mm) maximum web over label width; direct or thermal-transfer

### Software

Weber Print-Apply

### Print Characters & Bar Codes

**Text:** Selection of fonts, including OCR-A & B representation  
**Bar Codes:** UPC-A/E, EAN-8/13, Code 39, I 2 of 5, Code 128, Codabar, MSI 2 of 5, Code 93, UPC Bookland, Matrix 2 of 5, Postnet, UCC/EAN 128, PDF-417, Maxi-code, Data Matrix, QR Code, VeriCode, others

(Text and bar codes can be rotated 360 degrees; horizontal and vertical character expansion)

### Optional Features

- Adjustable stand
- Variable stroke sensor
- Label-on-pad sensor
- Low-label sensor
- Vacuum shut-off
- Low-pressure detection
- Strobe light